

GE
Security
Vigilant Fire & Life Safety

Sales Guide

Vigilant V-Series Intelligent Analog Life Safety Systems

A practical overview of product highlights
and competitive advantages



V-Series Life Safety Systems

Designed for Building Owners.
Engineered for Life Safety System Suppliers.

GE Vigilant V-Series life safety control systems offer the speed of high-end intelligent processing in configurations that deliver an uncomplicated solution for small to mid-sized applications. They feature an attractive contemporary design that fits with any decor. The gently curved doorfront offers a distinctive flair with available red or silver finishes. Controls are discreetly inset behind a striking black bezel.

With intelligent detection, electronic addressing, automatic device mapping, optional Ethernet® connectivity, and a full line of easily-configured option cards and modules, these quick-to-configure systems offer versatility that benefits building owners and life safety system suppliers alike.

This guide was developed to highlight the strengths of the V-Series and give those engaged in sales functions an understanding of the many competitive advantages these systems bring to sales calls.

Among the strongest selling points enjoyed by the V-Series is the confidence customers gain by dealing with an identity they've known and trusted all their lives. GE represents a solid foundation for technology that's been respected for generations. V-Series life safety systems are designed for building owners upon this legacy of innovation, and engineered for system suppliers to exceed the expectations of their customers.



Engineered for life safety system suppliers

*Quick installation and
easy maintenance
gives the V-Series
a competitive edge
that's good for your
bottom line.*

As a life safety system supplier, time and money are your primary concerns. You need to know up front what it's going to take to get the system up and running so you can present an accurate and competitive bid to your customer, the building owner. A system that proves difficult to install or that takes more time than anticipated to get a green light from the AHJ costs you money, risks your business reputation, and can land you in a deep hole with your customer.

V-Series life safety systems are simple to install and quick to service. They work in your favor, keeping installation costs predictable, while contributing to your bottom line – not being a burden on it. With time-saving features not found among competing products, these systems will give you the edge you need to stay ahead of the game every step of the way.

What you do with that edge is your business. You can use it to win more bids and land more jobs, or pocket the savings and call it a day. Both outcomes boost revenue, though moving more panels by passing the savings on to your customer is the better long-term business strategy.

Quick.

Service and maintenance contracts also represent a significant part of your revenue stream. Frequently the contract is negotiated for a fixed cost, so you want a system that's quick and easy to service. The short and infrequent service calls the V-Series requires allows you to maintain more systems at more sites with the same number of technicians and vehicles on the road.

V-Series' Ethernet programming and diagnostic feature is a big advantage in this respect, and provides opportunities for boosting service revenue while forging good relationships with your customers. This innovation in system communications permits valuable programming and diagnostic operations to be performed remotely from your shop, without the need to send out a service vehicle and technician.

It also offers you the opportunity to provide more responsive service to your customers. Advanced warning of dirty detectors and remote reporting features give your service department the opportunity to anticipate problems before your customer's system operation is affected.

This heads-off nuisance alarms and emergency service calls, and fosters a positive relationship between you and the building owner. A good relationship with the building owner not only bodes well when the service contract comes up for renewal, but also gives you an edge when it's time to install, expand, upgrade, or retrofit life safety systems at other properties owned by the customer.



Time-Saving Highlights for Installers...

- ✓ Simple system setup and configuration
- ✓ Easy-to-configure option cards and modules
- ✓ Incremental autoprogramming
- ✓ Device-level fault identification
- ✓ Electronic device addressing
- ✓ Automatic device mapping

Benefits for your Installers

Quick, easy setup and configuration are vital for your installers. Three programming methods are available – front panel, auto, and PC-based. While V-Series systems are 100 percent front panel programmable, each method allows the installer to select a programming method that suits the complexity of the tasks at hand. This lets them minimize the amount of time they spend tinkering with the control panel, and focus on getting it up and running in the most efficient way and in the shortest time possible.

- **Auto programming** gets the system up and running quickly and efficiently. With a few simple front panel commands, V-Series automatically identifies installed devices, maps their locations on the data loop, and sets system options for factory default operation. Autoprogramming recognizes and protects the settings of previously-installed devices so that its subsequent use can be used for incremental changes to system configuration – *this important feature saves time and dramatically simplifies installation and setup.*
- **Front panel programming** with the V-Series' intuitive on-board interface and easy-to-read LCD display allows the installer to quickly tweak the autoprogrammed settings to accommodate the needs of typical installations. This method also permits fast incremental changes to point and zone settings for site-specific needs.
- **PC programming** puts the power of a full-featured graphical configuration and diagnostic utility to work so that installers can easily take full advantage of the V-Series' well-organized programming engine. With the VS-CU utility and a laptop PC connected to the control panel, installers can quickly and efficiently set up correlation groups, run through device settings, and configure option cards and intelligent modules.

Installers also benefit from exclusive device-level fault identification, which takes the guesswork out of troubleshooting. The patented V-Series one-person walk test speeds the pace of installation, and its quick-install chassis allows the wallbox to be mounted during building construction while the electronics remain safe and out of harm's way.

Benefits for your Service Technicians

Time-saving remote programming and diagnostics will keep your service revenues up and your labor costs down. With the optional SA-ETH Ethernet port, V-Series systems can communicate over a standard 10/100 Base T connection locally over a LAN, or even remotely across the internet. *This valuable V-Series innovation allows your technician to run diagnostic routines and even make programming changes – all without leaving the shop.*

When a service call is required, your technician can generate and download system reports before heading out the door. These provide important information such as how many detectors are approaching their dirty thresholds, or which specific devices are in an off-normal state. Having this information ahead of time avoids return trips to the shop for parts, and dramatically shortens the length of the maintenance call: something both you and your customer will appreciate.

The simplicity built into V-Series systems makes adding devices a breeze for your maintenance personnel. The innovative autoprogramming feature identifies new devices and preserves the programming for existing ones. This means that incremental programming is no longer a juggling act – the system takes care of the details, shortening the length of the visit so that more sites can be serviced with the same number of technicians and service vehicles. And that makes for a healthier bottom line.

Time-Saving Highlights for Service Technicians...

- ✓ Remote programming
- ✓ Off-site diagnostic reporting
- ✓ Device-level fault identification
- ✓ Incremental autoprogramming

Simple.



Designed for building owners

V-Series systems slip quietly into the background, providing compliant, trouble-free service long into the future.

Building owners and facility managers share your interest in saving installation and maintenance costs. But for the owner, the system is a fixture of their building that merits little attention until things go wrong. They fear a system that will be a source of trouble. Among their greatest fears is a building constantly being evacuated for no reason. They don't want occupants to be bothered and desensitized to danger by a temperamental alarm system. And they don't want their AHJ on their backs or their fire department imposing fines for unnecessary emergency calls. Revenue and productivity are at stake. V-Series systems address these concerns through simple operation and easy service.

It's important to stress with building owners the breakthrough in system efficiency that V-Series systems represent. Intelligent life safety technology enhances the invisibility of the system from a building owner's perspective. It is more efficient, more reliable, and more stable than conventional systems. It offers greater flexibility and is less prone to nuisance alarms.

But until now this technology was out of range for most small building applications. This had to do with the complexity of installation and maintenance required by intelligent systems in the past. V-Series offers building owners a highly efficient means of bringing the advantages of intelligent technology to their properties, helping them manage safer environments with more confidence than ever before.

Quick installation and short service calls for their V-Series equipment are definite advantages that building owners will appreciate. The fact this technology virtually eliminates nuisance alarms will frequently tip the balance in favor of intelligent technology over conventional systems. The time-saving advantages of the V-Series over the competition will tip that balance once again.



Benefits for Building Owners

Building owners and facility managers want to focus on their buildings, not the life safety system. The worry-free operation of V-Series systems is a key selling feature for them. The quick setup enjoyed by installers, coupled with the high efficiency gained by service and maintenance personnel makes V-Series the best choice for building owners today.

Simple and intuitive front panel operation keeps building personnel in control of their V-Series system. They won't find themselves scrambling for the manual as the system counts down to alarm. And they won't have to call you every time an electrical storm causes a power outage.

V-Series also represents life safety intelligence geared expressly for smaller applications that used to be the exclusive domain of conventional systems. With V-Series, building owners now have access to technology that a short time ago was beyond the reach of most small building budgets.

These intelligent systems offer the building owner a fast and simple way to upgrade from their cumbersome conventional control panel. In fact, V-Series can use device wiring from most legacy systems with no adverse effect on performance. This means the building owner doesn't have to bear the expense of rewiring the building, or endure the disruption it would cause among building occupants.

Building owners also gain an advantage over conventional systems by being able to identify the specific device or location of the alarm or abnormal condition. The location and point details are displayed right on the panel. This provides fast response for emergency conditions. It also simplifies maintenance by identifying which individual devices require attention.

With automatic drift compensation, the V-Series continuously tunes detector sensitivity by adjusting for environmental conditions such as dirt and humidity. Meanwhile, programmable sounder bases eliminate the potential for disruption by providing a local audible alarm until the event is verified. This feature further reduces the risk of nuisance alarms, avoiding the disruption to building occupants and fire department fines that result.

Life Simplifying Highlights for Building Owners...

- ✓ Simple and intuitive front panel control
- ✓ Reduced nuisance alarms
- ✓ Pinpoints device location
- ✓ Identifies detectors requiring cleaning
- ✓ Replaceable detector chamber
- ✓ Easy maintenance
- ✓ Straightforward annual inspections
- ✓ Architecturally pleasing panel and device design

Easy.

NFPA-compliant detector diagnostics make annual testing simple and quick. Building occupants aren't overrun with technicians, and sensitive building areas remain secure.

The clean and simple design approach is carried right through to the aesthetics of V-Series control panels. Their attractive appearance means they won't be a blemish on an expensive architectural design. Their gently curved doorfronts offer a distinctive flair with available red or silver finishes. Controls are discreetly inset behind a striking black bezel.

Sleek, low-profile Genesis signals complement the overall design appeal of the V-Series, also providing independent horn silence over two wires. And that makes the V-Series/Genesis combination an even more attractive choice for building owners.

The inherent reliability of intelligent detection and the proven track record among GE life safety systems is an assurance to the building owner that their V-Series control panel will slip quietly into the background the moment the installer leaves the site, and provide fully-compliant trouble-free service for years to come.

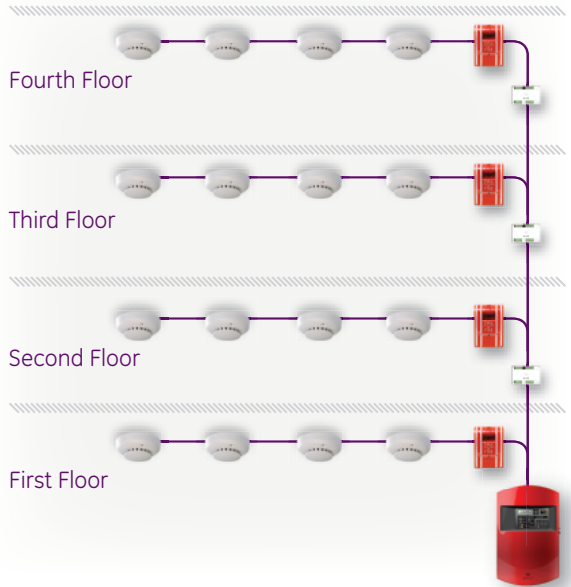
Time is money.

Applications

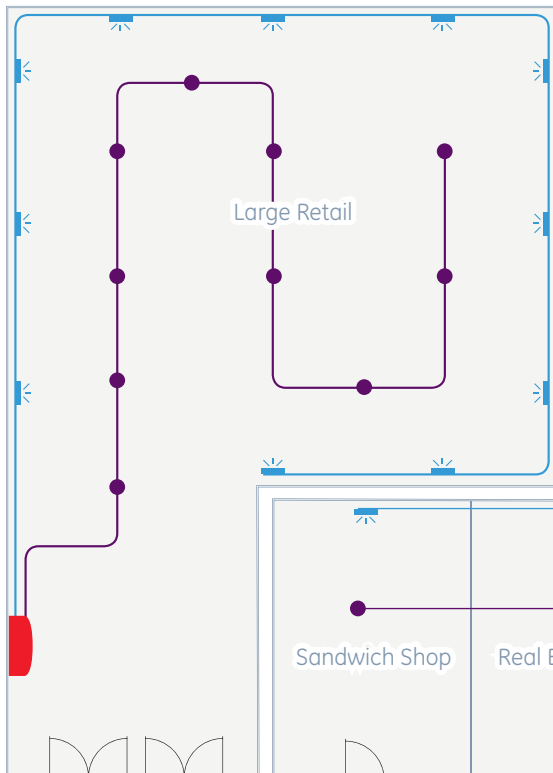
An easy alternative to conventional technology for...

- Schools
- Dormitories
- Nursing Homes
- Assisted Living
- Hospitals
- Clinics
- Strip Malls
- Restaurants
- Retail Facilities
- Cinemas
- Department Stores
- Grocery Stores
- Office Buildings
- Banks
- Child Care Centers
- Light Manufacturing
- Warehousing
- Apartment Buildings
- Hotels and Motels
- Utilities

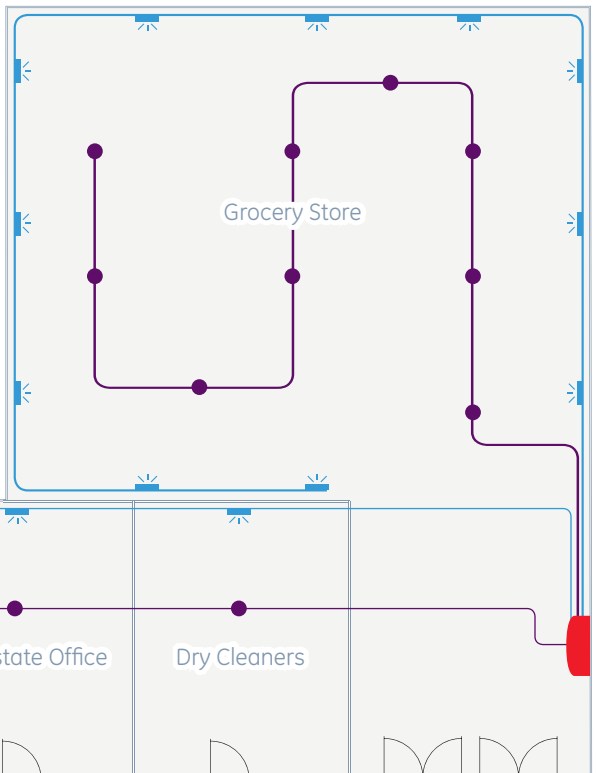
Multi-story



Outlet style retail



Multiple Occupancy



Selling Point Summary

| Available Innovation | Selling point | Primary Audience |
|--|---|-------------------------------------|
| Pinpoint device reporting | Identifies the specific device in alarm or requiring maintenance | Facility Managers & Building Owners |
| Replaceable smoke chamber | Replaceable smoke chamber Chamber cleaning is not required – simply plug in a new one | |
| Remote LED alarm annunciation | Low-cost local indication of alarm events | |
| Uses existing wiring | Low-cost retrofits without disruptive rewiring | |
| Up to 500 device points | Large “small system” capacity with lots of room for expansion | |
| Class A or B wiring | Flexible device configuration for added fault protection | |
| Multisensor detection | Reduced chance of nuisance alarms, greater sensitivity to fire | |
| NFPA-compliant detector testing | Simplified annual maintenance requirements | |
| Compatible with ANS Voice Annunciation | Voice evacuation notification and paging for enhanced emergency communication | |
| Supports up to eight serial annunciators | Satellite LCD or LED annunciation of off-normal conditions, plus common controls | |
| Support for graphic annunciation | Map-based event notification with LEDs, plus LCD display and common controls | |
| Intelligent detection | Fast alarm response, reduced nuisance alarms, lower maintenance costs, automatic sensitivity adjustment | |
| Ethernet port | Remote diagnostics, programming and a variety of system reports; easier to maintain, less costly to operate | |
| NACs support Genesis signals | Built-in UL 1971-compliant strobe synchronization, plus independent horn silence over two wires without extra modules | Installers |
| Up to 20,000 ft. data loop | Cost-effective life safety protection for large protected areas and multi-story buildings | |
| Patented one-person walk test | Quick verification of system operation | |
| Quick-install component chassis | Prevents electronics from becoming damaged during building construction | Installers |
| Electronic addressing | No dipswitches to set: faster installation of field devices | |
| Automatic device mapping | Efficient diagnostics, simple-to-generate as-built drawings | |
| Module-level ground fault support | Pinpoints the location of a device in trouble, reducing troubleshooting time spent onsite | Service Technicians |
| Incremental autoprogramming | Quick panel configuration for newly-added devices | |
| Auto, front panel, or PC programming | Choice of configuration method saves time, simplifies setup | |
| Remote diagnostics & reporting | Quick service calls, no return trips for parts | |
| Dirty detector warnings | Pre-emptive service calls for easier scheduling | |

V-SERIES

COMPETITIVE ADVANTAGES

Ethernet Port

Remote diagnostics, programming and reports simplify system operation and maintenance

Incremental Autoprogramming

Quick panel configuration for newly-added devices

Replaceable Smoke Chamber

No need to clean the detector – simply plug in a new one!

Support for Genesis Signals

Built-in UL 1971-compliant strobe synchronization, plus independent horn silence over two wires

Up to 500 Device Points

Large "small system" capacity with lots of room for expansion

Patented One-person Walk Test

Quick verification of system operation

Module-level Ground Fault Support

Pinpoints the location of a device in trouble, reducing troubleshooting time onsite

Up to 20,000 feet of wiring per data loop

Up to 20,000 feet of wiring per data loop

VS2: one loop that supports up to 250 intelligent devices. Can be expanded to two loops. Each loop supports up to 125 detectors and up to 125 modules.

VS1: one loop that supports up to 64 intelligent devices of any type.

VS2: Four Class B or two Class A NACs

VS1: Two Class B or two optional Class A NACs

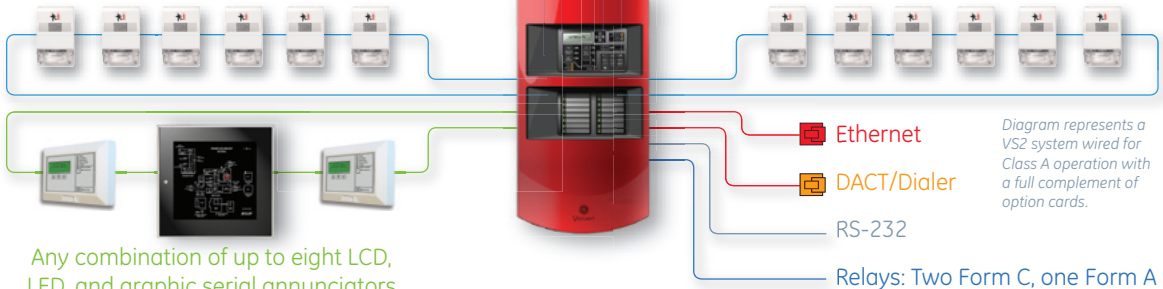


Diagram represents a VS2 system wired for Class A operation with a full complement of option cards.

Any combination of up to eight LCD, LED, and graphic serial annunciators

Product Summary

VS1 Intelligent Control Panel

Comes standard with one loop that supports up to 64 intelligent devices of any type and two Class B NACs. Configures for Class A wiring with option card.

VS2 Intelligent Control Panel

Comes standard with one loop that supports up to 250 intelligent devices. Can be expanded to two loops. Each loop supports up to 125 detectors and up to 125 modules. The VS2 also comes standard with four Class B NACs that can be configured to serve as two Class A NACs.

Available Option Cards

- Dual Line Dialer/Modem, supports Contact ID
- Serial Port (RS-232), for connection to printers & computers
- Ethernet Port, Slave, for Ethernet connection to programming, diagnostic and report program
- Class A adapter module. Provides Class A capacity on NACs
- SLC Loop Expansion Module. Adds second loop to VS2 systems, 250 point capacity
- LED Annunciator Module, 16 groups, 2 LEDs per group with insertable labeling

Compatible Intelligent Detectors & Bases

- Intelligent Multisensor Analog Optical/Fixed Temperature Heat Detector
- Intelligent Analog Optical Smoke Detector
- Intelligent Analog Rate-of-Rise Heat Detector
- Intelligent Analog Fixed Temperature Heat Detector
- Standard Base
- Relay Detector Base
- Isolator Detector Base
- Audible (Sounder) Detector Base

System Accessories

- City Tie Module. Provides connection to a local energy fire alarm box.
- Isolator Module - RS-232. For use with short haul modems.
- Reverse Polarity Module
- Single and Dual Input Signal Modules

Intelligent Modules

- Control Relay Modules
- Polarity Reversal Relay Modules
- Single and Dual Input Modules
- Fault Isolator Module
- Monitor Module
- Waterflow/Tamper Module

Annunciators & Graphics Drivers

- Remote LCD annunciator, 4X20 display with common Indicators
- Remote LCD annunciator, 4X20 display with common Indicators and common controls
- Remote LED annunciator, 16 zones (2 LEDs each) with common indicators
- Remote LED annunciator, 16 zones (2 LEDs each) with common indicators and common controls
- Remote LED annunciator zone expander, 24 zones (2 LEDs each)
- Graphic annunciator driver with outputs for 32 zones, common indicators and common controls

Related Literature

- Data Sheet M85005-0131 – V-Series Life Safety Control Panels
- Data Sheet M85001-0592 – Intelligent Detectors and Bases
- Data Sheet M85005-0128 – R-Series Remote Annunciators
- Data Sheet M85005-0129 – V-Series Cards & Accessories
- Technical Reference Manual 3101112 – V-Series Life Safety Control Panels

GE Security

U.S.
T 888-244-9979
F 866-503-3996

Canada
T 519 376 2430
F 519 376 7258

Asia
T 852 2907 8108
F 852 2142 5063

Latin America
T 305 593 4301
F 305 593 4300

www.gesecurity.com/vigilant

© 2008 General Electric Company
All Rights Reserved

Vigilant is a trademark of
GE Security, Inc.



imagination at work