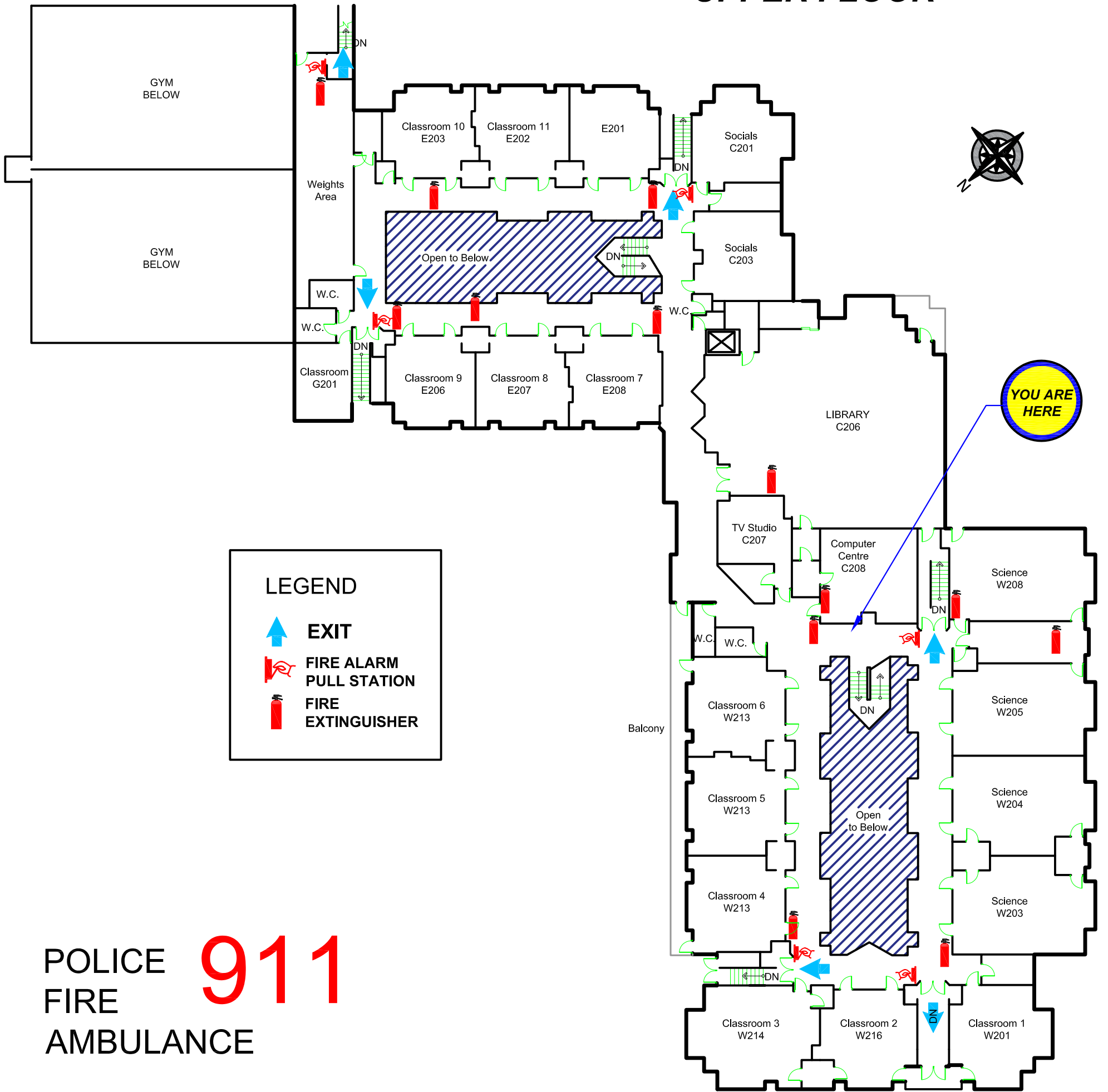


**Building Name**  
**Building Address**

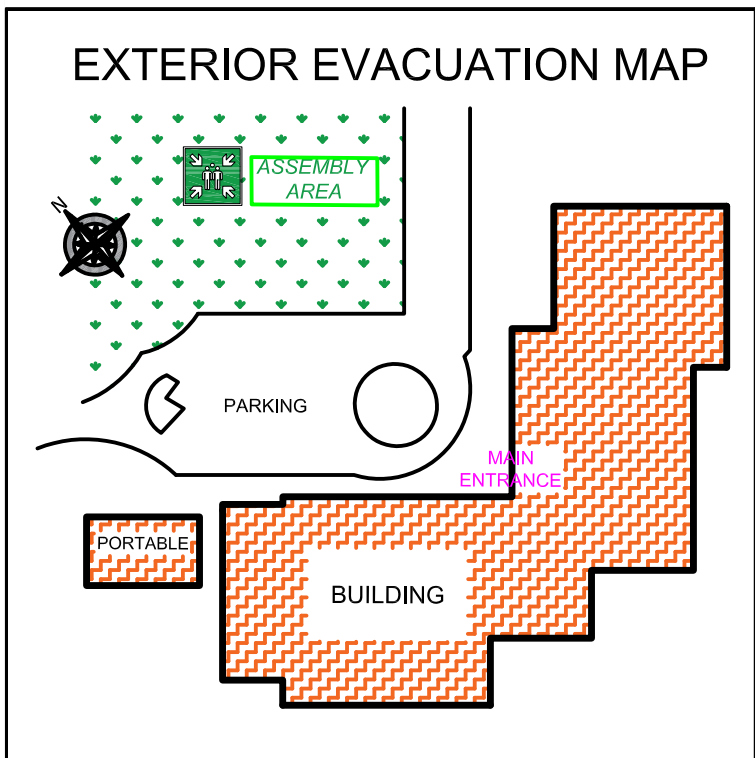
**UPPER FLOOR**



**LEGEND**

- EXIT
- FIRE ALARM PULL STATION
- FIRE EXTINGUISHER

POLICE **911**  
 FIRE  
 AMBULANCE



**IN CASE OF FIRE REMAIN CALM**

- IF YOU DISCOVER FIRE - "RACE" Procedure**
- **R**emove anyone in immediate danger away from flames and smoke
  - **A**lert occupants - activate the nearest alarm
  - **C**ontain the spread of the fire and smoke by ensuring doors and windows are closed. DO NOT LOCK
  - **E**xtinguish using the nearest apparatus, if it is safe to do so. If the situation is unsafe -
  - **E**vacuate the area. Proceed to assembly area.

- IF YOU ENCOUNTER HEAVY SMOKE**
- **C**rouch low to the floor if smoke enters the room
  - **I**f trapped, call 911 and wait to be rescued
  - **R**emain Calm - do not panic

**THE ASSEMBLY AREA FOR THIS BUILDING IS THE SPORTS FIELD TO THE NORTH**  
**DO NOT USE ELEVATOR**